

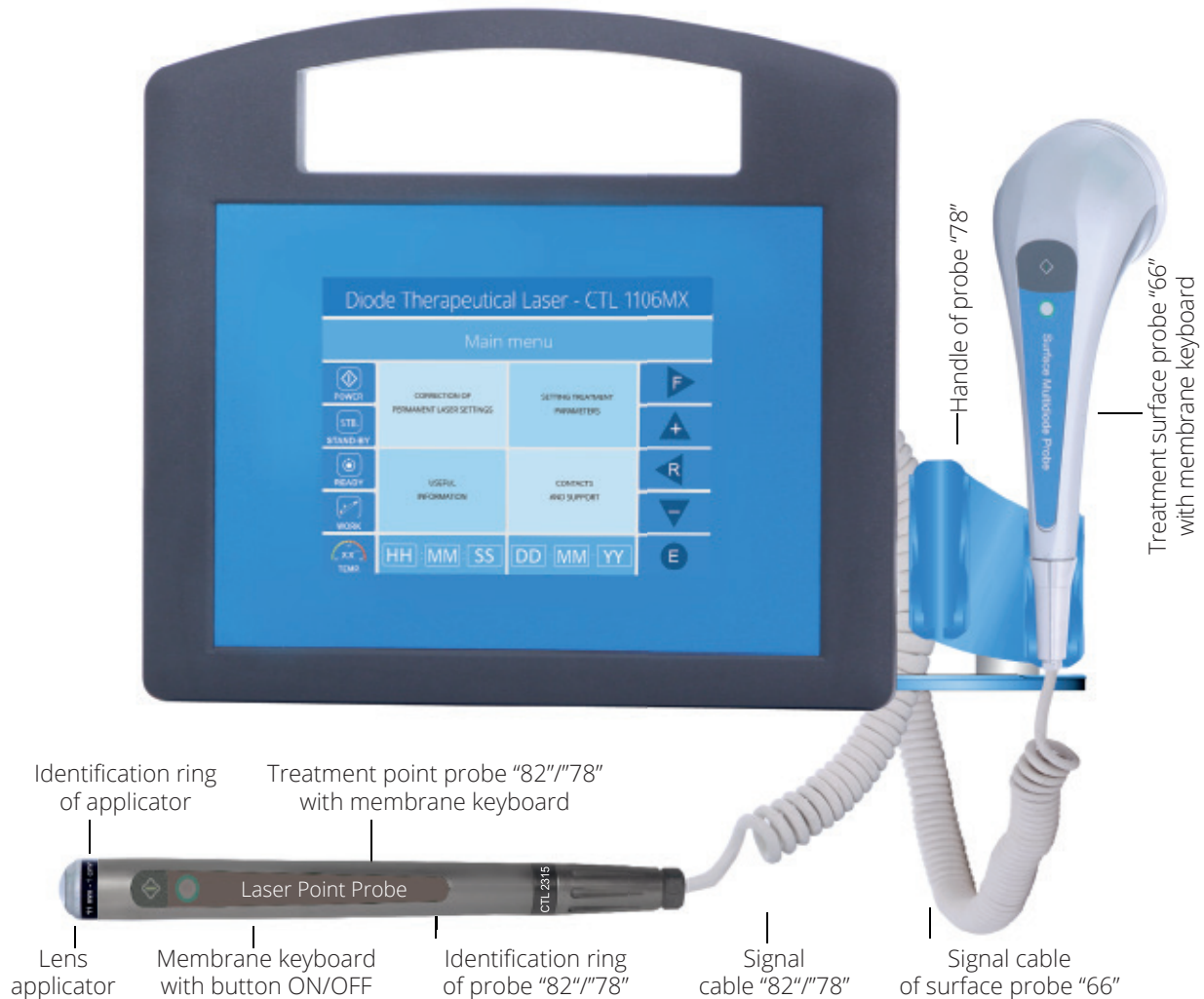


Diode Therapy Laser

CTL 1106MX - Doris Trio **DER**



820nm - 600mW and 660nm - 300mW(9x40mW) + 780nm - 300mW(8x40mW)



ISO 9001 • CE • ISO 13485

REF: CTL1106MX-0820-.600 and 0660-.300. + 0780-.300.27bl.TT.DER •

VER: B2.2-16.PS-EN.27g.DER

Basic functional advantages

- 3 wavelength in one unit
- Painless treatments
- Quick treatment effects
- High efficiency and effectiveness
- Wide range of applications
- Stable parameters
- Portable and easy to operate
- Very light, safety
- High patient and doctor comfort
- Colour touch screen
- User identification by personal PIN code
- Switching on laser by foot switch or button ON in display
- Easy to use, intuitive interface
- The highest quality and reliability
- Attractive design, modern styling
- Durable and reliable - 2 years warranty !
- Fair price for properties !

CTL 1106MX - Doris Trio Laser

Examples of aesthetic medicine and dermatology applications

Wound healing acceleration

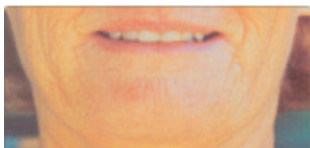
- Post-operation wounds
- Post-amputation wounds
- Post-injury wounds
- Complicated, infected wounds
- Wounds in metabolic diseases
- Wounds after skin grafts
- Decubital wounds, Non-fibrous scars
- Wounds after amputation, Ulcerations

Wounds induced by physical or chemical factor

- Thermal burns and burn
- Radiation burns
- Frostbites
- Decubital wounds
- Chemical burns (for example mustard gas-induced burns)

Venous dermatoses

- Crural and venous ulcer
- Venous insufficiency ulceration
- Buerger's disease
- Diabetic foot syndrome



Example of flaccid skin



Dermatitis of various etiology

- Acne vulgaris
- Acne rosacea
- Alopecia
- Atopic dermatitis
- Herpetic dermatitis
- Bacterial infections of skin and subcutaneous tissue
- Seborrheic dermatitis
- Seborrheic alopecia
- Furuncles
- Scleroderma

Inflammations of skin, skin appendages

- Atopic and contact dermatitis
- Seborrheic dermatitis
- Urticaria
- Furuncles
- Herpetiform dermatitis and herpes labialis
- Actinic cheilitis
- Dishydrotic eczema, Linear atrophy



Example of acne vulgaris



Basic technical parameters	Therapy Laser - 820	Therapy Laser - 660	Therapy Laser - 780
Laser type	diode	diode	diode
Wavelength	820nm	660nm	780nm
Max. output power	600mW	300mW (9x40mW)	300mW (8x40mW)
Operation mode	continuous (c.w.)	continuous (c.w.)	continuous (c.w.)
Continuous mode (c.w.)			
Max. output power - $P_{c.w.}$	600mW regulated from 50 mW to 600mW with step 50mW	300mW regulated from 50mW to 300mW with step 50mW	300mW regulated from 50mW to 300mW with step 50mW
Display / Keyboard	colour TFT/ Touch		
Power supply	universal input (85-265)VAC, (50-60)Hz		
Power consumption	<20W		
Delivery beam system	treatment point probe - 82 with lens applicator $d_a=11\text{mm}$, $S_a=1\text{cm}^2$ or surface probe 66/78 $d_a=50\text{mm}$ $S_a=30\text{cm}^2$		
Switching beam system	ON/OFF switch on probe keyboard or button START on LCD screen or foot switch		
Safety classes	class 3B laser safety, class I type B of electrical safety		
Dimensions/ Weight	270mmx195mmx90mm(W x D x H) / ~3,0kg /		
REference number	CTL 1106MX-0820-.600 and 0660-.300. + 0780-.300.27bl.TT.DER		